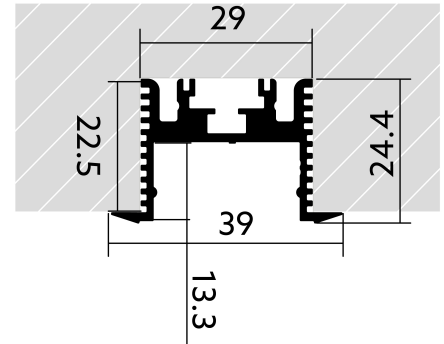
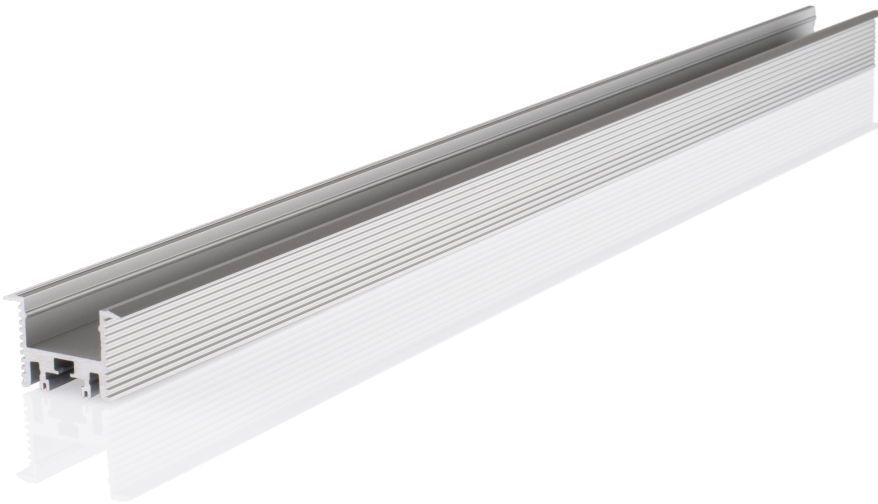


Installation profile HT01

BLPHT01035200003900244

Article no.: 170690

BILTON
FOCUSED
ON
LINEAR
LIGHT



Material



Height



Width



Power consumption

TENDER TEXT

BL Profile HT01 Installation 35W/m L2000xB39xH24,4mm BILTON LEDON Technology Installation profile HT01 Article 170690 The Installation profile HT01 can be combined with all covers from the HT family. The profile is made of Aluminium with an Anodised finish and has a power consumption of up to 35 W. Dimensions (L x W x H): 2000.0 mm x 39.0 mm x 24.4 mm Please note that cutting tolerances of +/- 2mm may occur.

Installation profile HT01

BLPHT01035200003900244

Article no.: 170690

MECHANICAL DATA

Net width [mm]	39.0
Net height [mm]	24.4
Net length [mm]	2000.0
Colour	lichtgrau
Mounting method	Built - in
Surface protection	Anodised
Surfacetreatment	Anodised
Net weight [g]	1222
Material	Aluminium

TEMPERATURE TECHNICAL DATA

Thermal conductivity	23.4
Power consumption [W]	35

PACKAGING INFORMATION

EAN	4251160704680
Article no.	170690
Customs tariff number	76042990
Length [mm]	2000.0
Gross weight [g]	1222.0
State of origin	DE

NECESSARY ACCESSORIES

Article	Article no.
Angle steel XTC4	170456
Clip steel YTC5	170468
Angle ALU YTC8	170469
Nut Connector YTV1	170471
Endcap HT001	170633

SAFETY INFORMATION: Read the safety and installation instructions carefully and completely before commissioning. The operating instructions can be found at: www.biltongroup.com

DISCLAIMER OF WARRANTY: The technical information corresponds to the status at the time of printing and have been worked out to the best of our knowledge. However, errors and printing errors are reserved. Make sure that you always use the latest version of the data sheets. The latest data sheet can be found at: www.biltongroup.com