

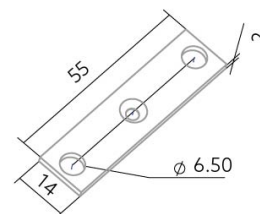
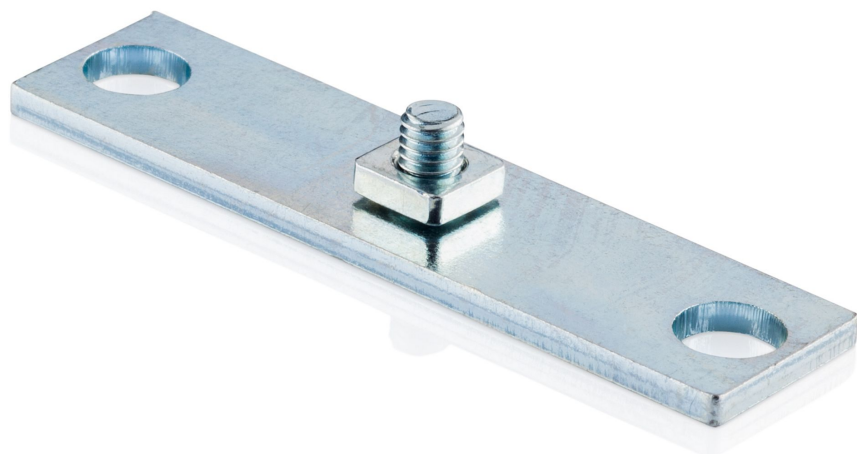
Installation panel Steel UTM1

BLMOUUTMPSTL1400200550

Article no.: 170444

BILTON

FOCUSED
ON
LINEAR
LIGHT



2.0
mm

Length

14.0
mm

Height

55.0
mm

Width

TENDER TEXT

BILTON MOUNTING UT installation panel Steel 14x2x55mm Accessories Installation panel Steel UTM1 Article 170444 The accessories Installation panel Steel UTM1 consists of Steel with a Silver surface and it is easy to assemble. Dimension (L x W x H): 2.0 mm x 55.0 mm x 14.0 mm

Installation panel Steel UTM1

BLMOUUTMPSTL1400200550

Article no.: 170444

MECHANICAL DATA

Net width [mm]	14.0
Net height [mm]	2.0
Net length [mm]	55.0
Colour	Silver
Net weight [g]	11
Material	Steel
Type of accessory	Monting plate

PACKAGING INFORMATION

EAN	4250716913958
Article no.	170444
Length [mm]	2.0
Gross weight [g]	12.3
Gross height [mm]	2.0
Gross width [mm]	14.0
Gross length [mm]	55.0

SAFETY INFORMATION: Read the safety and installation instructions carefully and completely before commissioning. The operating instructions can be found at: www.biltongroup.com

DISCLAIMER OF WARRANTY: The technical information corresponds to the status at the time of printing and have been worked out to the best of our knowledge. However, errors and printing errors are reserved. Make sure that you always use the latest version of the data sheets. The latest data sheet can be found at: www.biltongroup.com